

What is Click-Clack Decking Tile

The Click-Clack decking tile is a new concept generated from the traditional floor, which is easier and quicker to lay. It is combined by one piece of traditional floor (which can be different material such as ceramic, granite, slate and so on) and one piece of plastic grid base underneath which has three showing out tabs on two sides and three corresponding slots on the underside of the other two sides. The base attached to the floor with special flexible adhesive, enable the whole system to interlock with each other pieces by using the showing out tabs of one tile to lock into the corresponding slots on the underside of the other tile by a single click-clack action, thus, we call it DIY Tile.

It does not need any adhesive, tile spacer or grout to hold them in place. The pieces are laid on the top of solid floor and clip together with a single action, without any need of building work and doesn't take much trouble, time and money.



Why Choose Click-Clack Decking Tile

Forgiving of cracked concrete surfaces

So if your old patio is suffering from cracks and minor pitting or other damages, firstly you don't need to repair the surface unless the cracking is too bad that there is a significant height difference on either side of cracks. In most cases, you can simply lay the deck tiles directly over the top of the existing concrete.

With extremely low maintenance

To remove surface dirt, just wipe with a wet cloth or wash with water using a sponge or a brush if heavily soiled. To remove more stubborn marks on the tiles, it may be necessary to use a mild household detergent. In this case, rinse well after washing to remove all traces of detergent.

Base allows water to drain away freely

This means that the top surface will dry out as quickly as possible and will avoid any puddles from forming on the surface which could create a slip hazard.

Available in a wide range of materials

So not only can you cover your deck with wood tiles, but there are also slate deck tiles, travertine stone deck tiles, composite wood deck tiles and artificial grass deck tiles and so on. All these will basically have the same properties as the original surfacing materials.

Quick and easy to install, no skill needed

They are so quick and easy to install and don't really require any particular skills. Because of the built-in interlocking tabs, complete accuracy is assured when installing the tiles because they simply snap into place.

Wide usage and application

And of course the tiles can be used on much more than just patios. They are ideal for use in apartment buildings on balconies and rooftops, especially since they can conveniently be carried out elevators or stairs and used where permanently fixed materials are prohibited.

FOSHAN JIABANG GARDEN
SUPPLIES CO., LTD.
佛山市嘉邦园艺用品有限公司

Add: Room 2001A, 20/F Building #2, Thrive United IFC, No.1
Shilong South Road, Nanhai District, Foshan, Guangdong, China
Tel: 86-757-86397638 86393878 Fax: 86-757-86397678
Email: postmaster@diytile.net Website: <http://www.diytile.net>



WeChat Official account
please scan for more information

DECKING TILE COLLECTION

Click Clack flooring is a kind of innovative floor. Easy to install, rich in product style and color.

You don't need any adhesives, tiles spacers or grout to lay Click Clack flooring. Everything you need for a quick and easy installation is included in each decking tile box.

This innovative floor will surprise your life and make it impressive!
It is a kind of simple ART!

click clack®
flooring

立味地板



Click Clack®

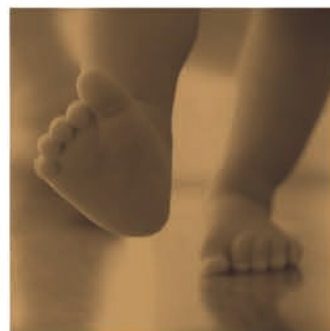
立味地板

The Click Clack system is a new concept generated from the traditional tile, which is easier and quicker to lay compare to the traditional tile. The pieces click together easily by a single click-clack action.

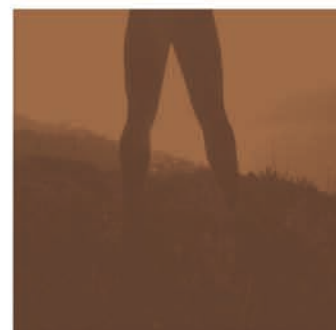
The installation is as easy as placing with Lego® block, even a child can do it!



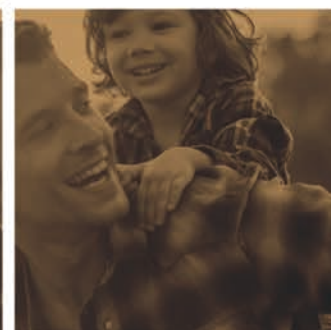
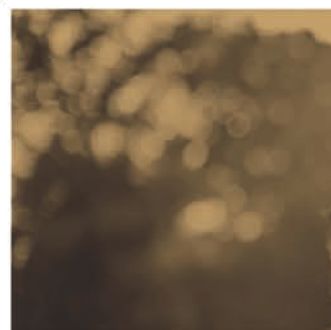
Innovation



Happiness



Freedom



Individual

Click Clack flooring application interact family members and friends with each other.
Thinking, discussing, adjusting and cooperating.....
motivate endless creativity and motility.
Every corner is filled with elegant art.
Every click is in hand with happiness.

No mess, no adhesive, no grout.
No special tools & skills are required.
Durable, hard wearing and UV resistance.
Suitable for all outdoor applications.
With more than 200 items available.
Easy installation and free combination.

Ceramic series | ST-C



GARDEN



Freshness

The floor integrates into the flower,
stone and the fountain.
The sunshine sprays on it.....
What a wonderful paradise!

Relaxation

A space of culture.....
The flavor of art is filled in the air,
which slowing down the pace of life!



COFFEE SHOP



Artificial grass series | G004
WPC series | SM-4P-A LDH



ARTIFICIAL GRASS SERIES

〔假草系列〕

Normal grass
Permeable grass

The artificial grass series looks like real grass, but comparing to the real grass, it does not need to maintenance. It has permeable backing and normal backing available.

G004



G012



G004-GREEN



CERAMIC TILE SERIES

〔瓷砖系列〕

0.8cm ceramic
1.0cm ceramic
Frost ceramic

The ceramic series is very convenient and economical. It has anti slip surface, durable and stable, no need any maintenance. It has 3 subseries available.

C051



N044



JBH008B



SOLID WOOD SERIES

〔实木系列〕

Fir wood
Acacia wood

The solid wood series is made by natural wood, which will bring you back to the natural world. It has different combination and wood species available.

S4P3030PH



S4P3030BH



A12P3030PC





WOOD PLASTIC (WPC)SERIES 〔塑木系列〕

Grooved surface
Wood imitate surface

The wood plastic (WPC) series is a fantastic product, with low maintenance, and can resist fading and won't rot, splinter or decay. It can be recycled after use.

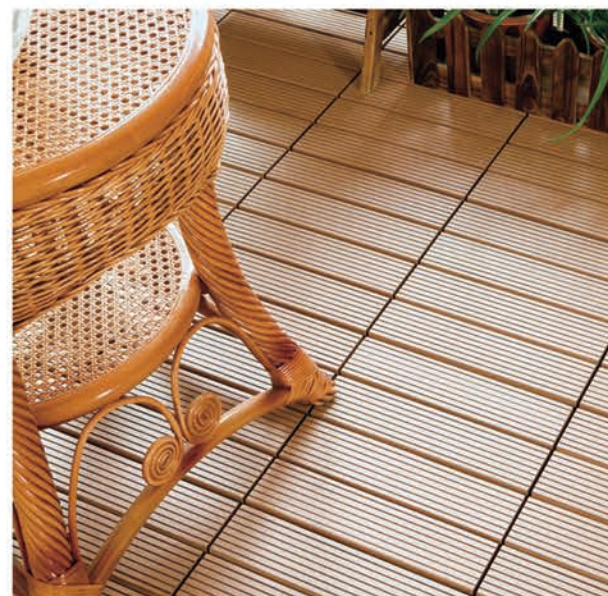
SM-4P-A BH



SM-4P-A LDH



SM-4P-B NTU



NATURAL STONE SERIES 〔石材系列〕

Slate stone
Granite stone
Travertine stone

The natural stone series has slate, granite and travertine stone. All the stone items are very durable and heat resistance, with no maintenance.

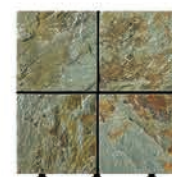
JBG2031



TTLNP-GY-YL



JBT001



SOLAR LIGHT SERIES 〔太阳能LED系列〕

Available in:
WPC series
Wood series
PS series

The Solar light series is combined the solar light with the decking tile together. It will be charged in the daytime and lighting automatically in the evening.

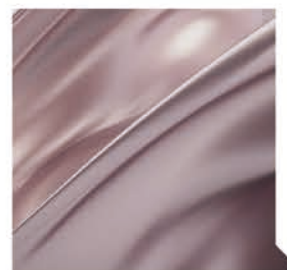
SSLB-WPC30-BP



SSLW-WPC30-LDP



SSLB-WPC30-LDX



RUBBER SERIES 〔橡胶系列〕

EPDM rubber
SBR rubber

The rubber series is voice absorption, natural resiliency and low maintenance. It is an ideal choice for the children and the elders.

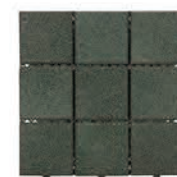
XJ-SBR-RD001



XJ-SBR-DBR003



XJ-SBR-GN004



POLYSTYRENE (PS) SERIES 〔发泡胶系列〕

1.0cm PS
1.2cm PS

The PS series is very lightweight so we can easily carry and install anywhere. It is also moisture resistant and can be recycled after use.

PS12P30312 DGC



PS9P30312 LG



PS8P30312 TKH



ALUMINUM SERIES 〔合金系列〕

Grooved surface

Aluminum is an essential element of modern life. It is light weight, durable and infinitely recyclable. Aluminum is truly the metal of modern life.

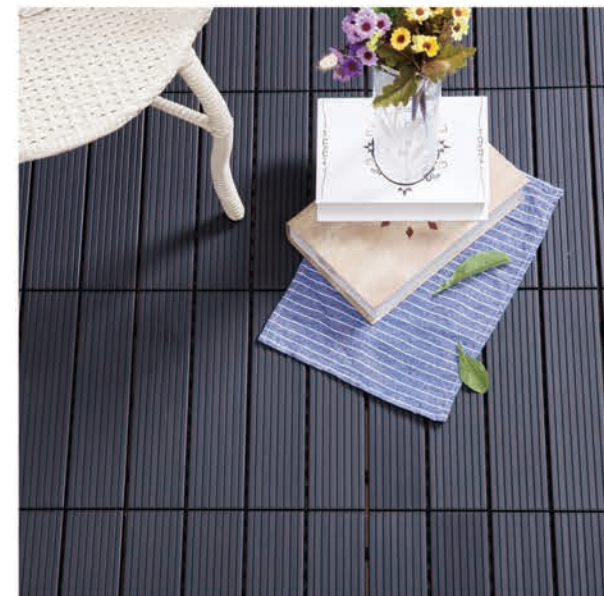
AL4P3030 Black



AL4P3030 Brown



AL4P3030 Coffee



Product List

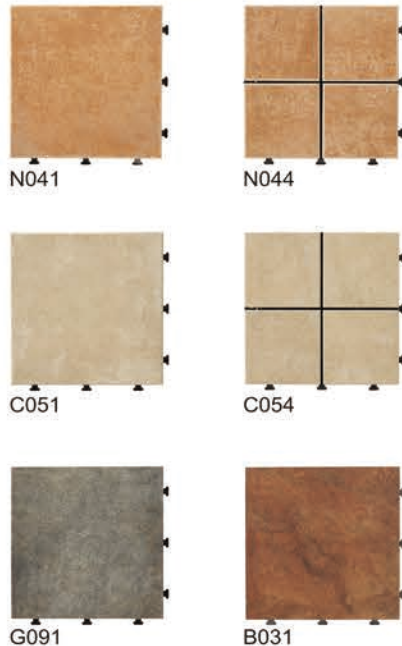
0.8CM CERAMIC TILE SERIES



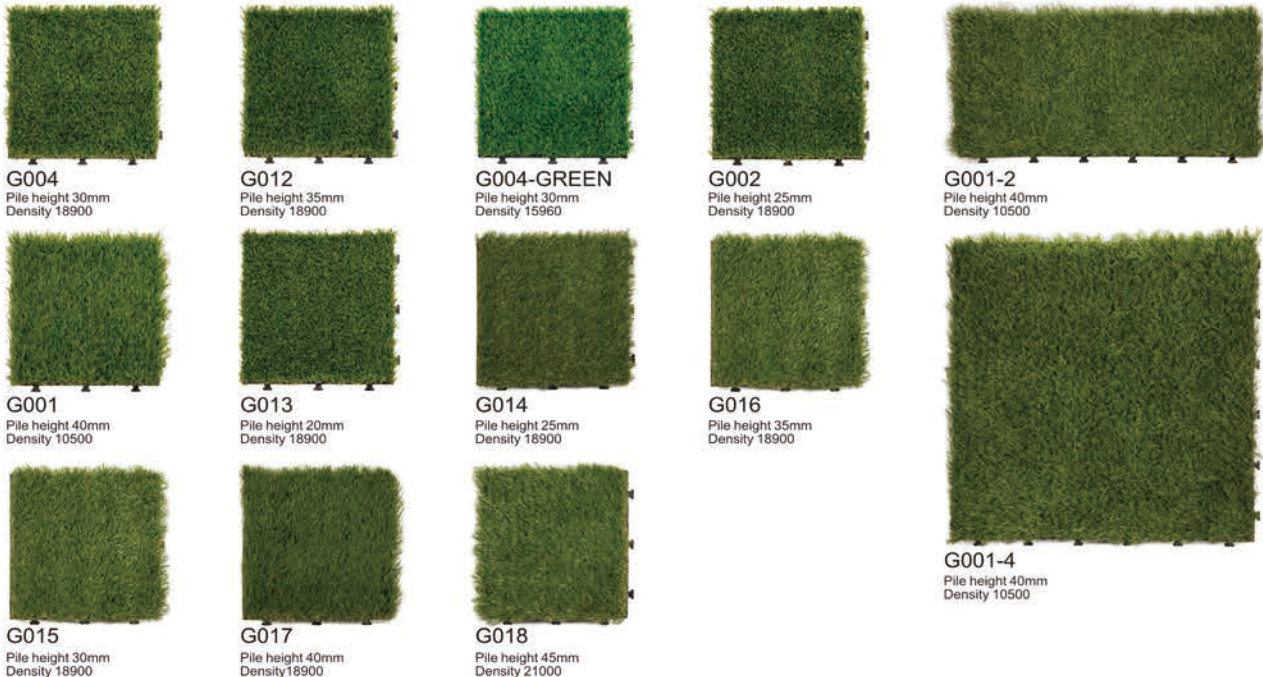
1.0 CM CERAMIC TILE SERIES



FROST TILE SERIES

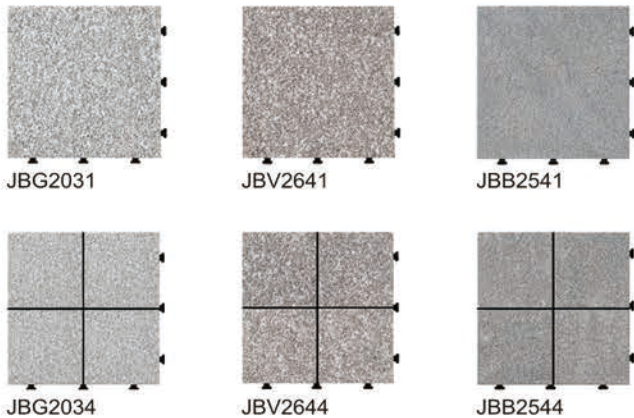


ARTIFICIAL GRASS SERIES



Product List

GRANITE SERIES



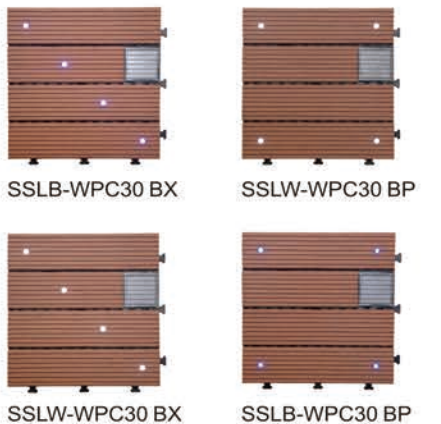
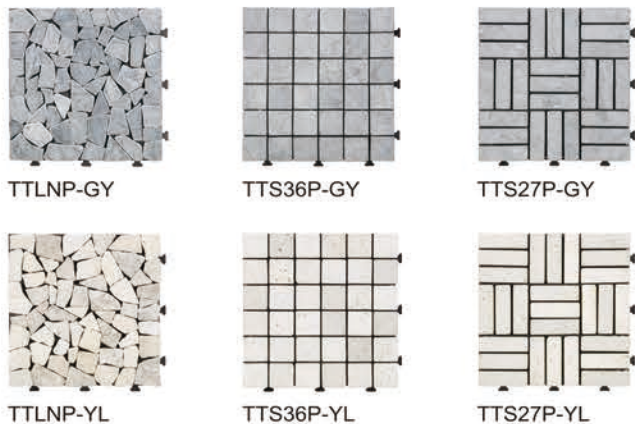
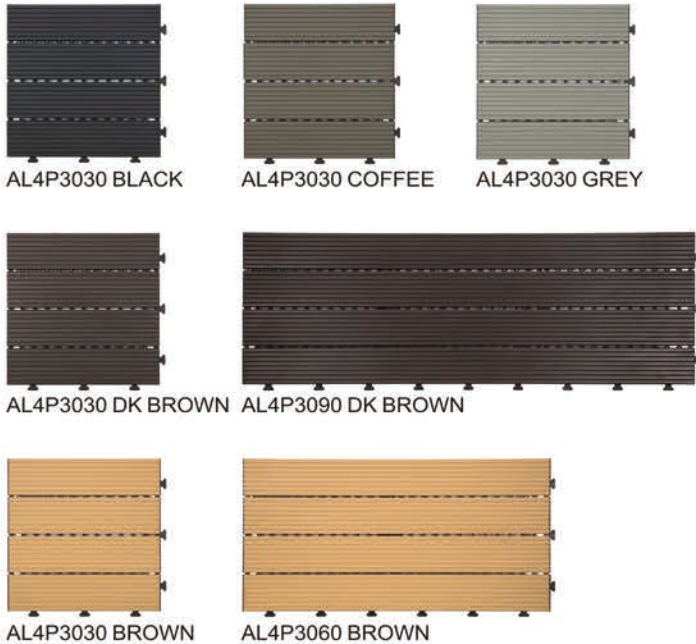
TRAVERTINE STONE SERIES



SOLAR LIGHT WPC SERIES



ALUMINUM SERIES

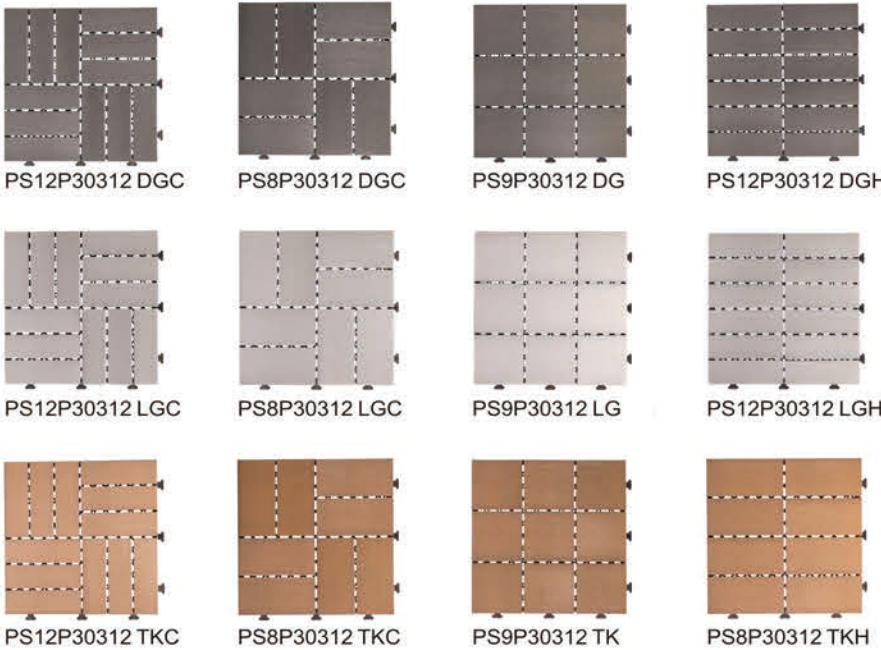


TALL TILE SERIES

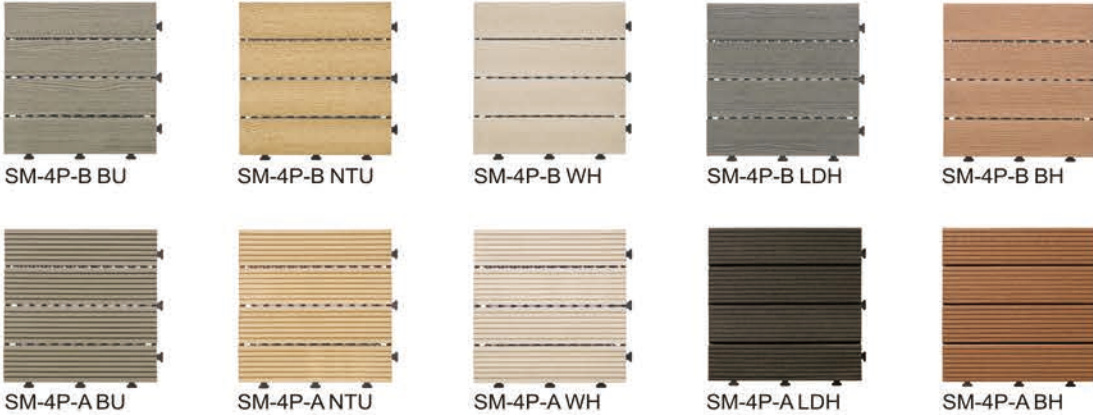


Product List

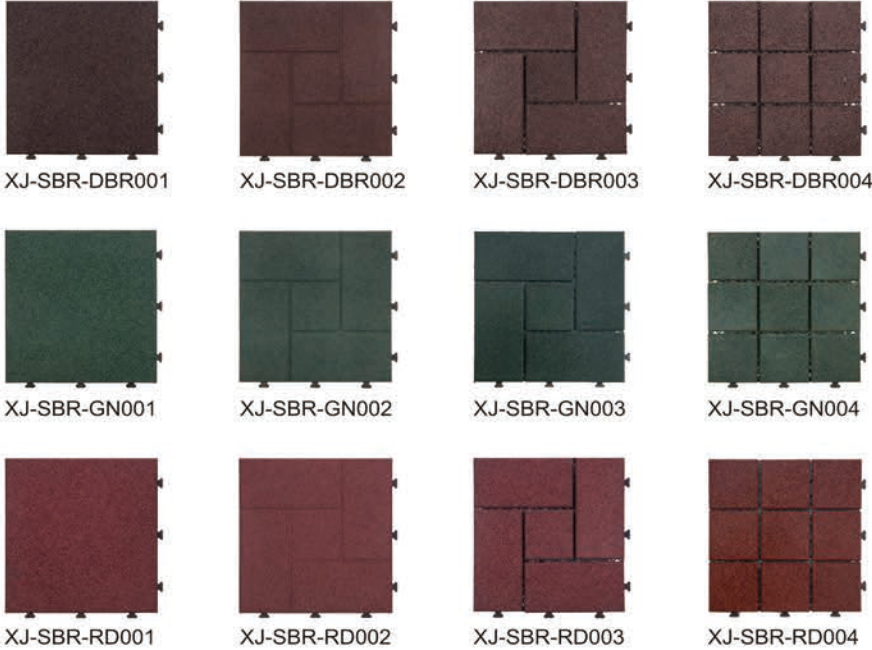
PS SERIES



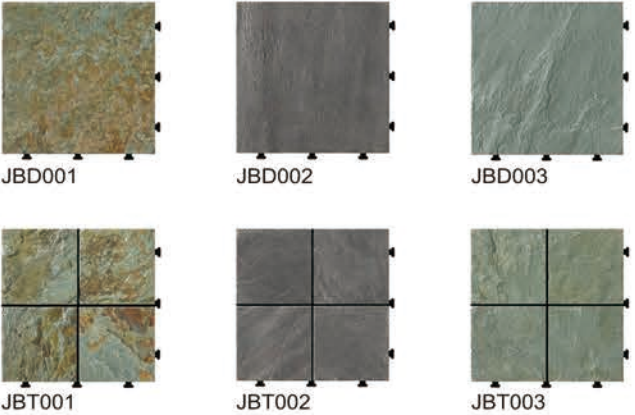
WPC SERIES



RUBBER SERIES

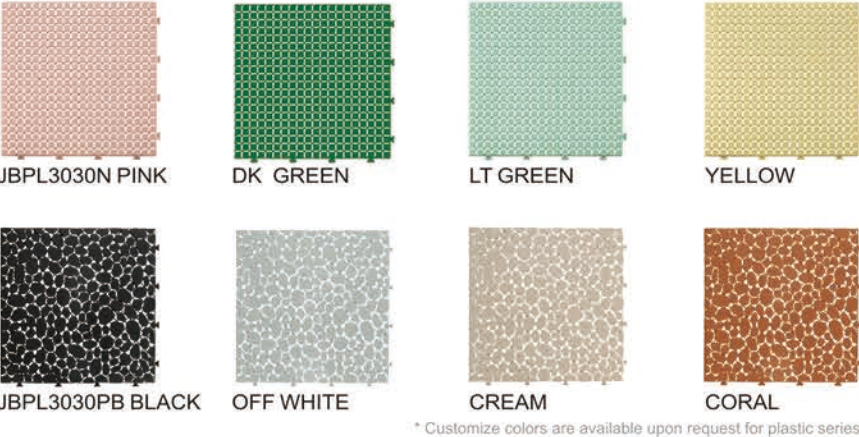


SLATE SERIES



Product List

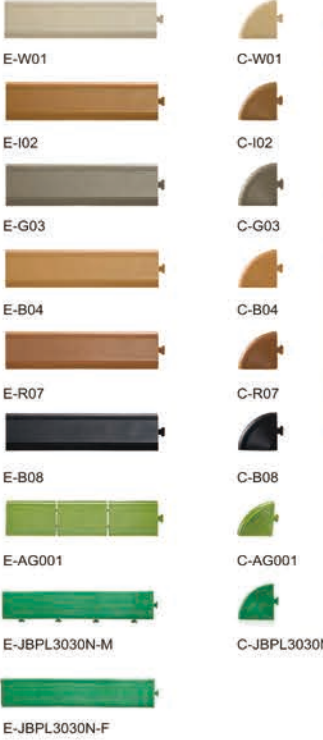
PLASTIC MAT SERIES



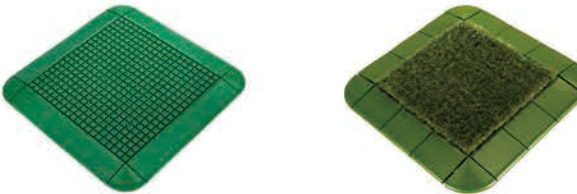
NATURAL WOOD SERIES



CORNERS & EDGES



* corners & edges for stone, ceramic, WPC, wood, PS series



* corners & edges for plastic mat series * corners & edges for artificial grass series

10*10CM TILE



*available colors are same as ceramic tile series

TRIANGLE TILE



*Triangle tile project to assemble the tile into rhombus way

LOOSE PEBBLE

